



Grinnell

by Tyco Fire Suppression & Building Products

Model TD830

Triple-Duty Valve, Flow-Control Type

**Available in Sizes 2 to 14 Inches
(DN50 to DN350)**

The Model TD830 Triple-Duty Valve is primarily designed for installation in pump discharge piping where it functions as a spring-loaded silent check valve, flow control valve, and shut-off valve. The valve can be installed quickly into grooved end piping systems with two GRINNELL couplings.

The Model TD830 Triple-Duty Valve operates automatically and silently. Line pressure of approximately $\frac{1}{4}$ psi (0.02, bar) opens the disc. The spring closes the disc as the line flow approaches zero in order to prevent flow reversal and water hammer.

Additional Features

- Easy-to-read graduated position indicator ensures accurate disc positioning for throttling service
- Externally guided disc has soft seat to ensure a leak-tight seal
- Yoke and stem are unwetted external parts that eliminate corrosion from line fluids
- Backed by the industry's best 10-Year Limited Warranty



Technical Data

Sizes

2 to 14 inches (DN50 to DN350)

Maximum Pressure

- Sizes 2 to 12 Inches
640 psi (44 bar) at 100°F (38°C)
565 psi (39 bar) at 300°F (149°C)
- Size 14 Inch
500 psi (34 bar) at 100°F (38°C)
400 psi (28 bar) at 300°F (149°C)

Materials of Construction

- Body and Yoke
Ductile iron conforming to ASTM A 536, or ASTM A 395
- Seat Guide
Bronze conforming to ASTM B 62, 85/5/5/5
- Disc
Cast iron conforming to ASTM A 126B
- Spring
302 Stainless Steel
- Stem
Bronze conforming to ASTM B21
- Seat, Disc, and Stem O-Rings
EPDM
- Seat
Bronze
- Flanged Gland
Cast iron conforming to ASTM A 126B
- Cover Gasket and Packing
Non-Asbestos
- Stem Guide
Ductile iron conforming to ASTM A 536 or ASTM A 395
- Finish
Black paint



800-558-5236
www.grinnell.com
mechserv@grinnell.com

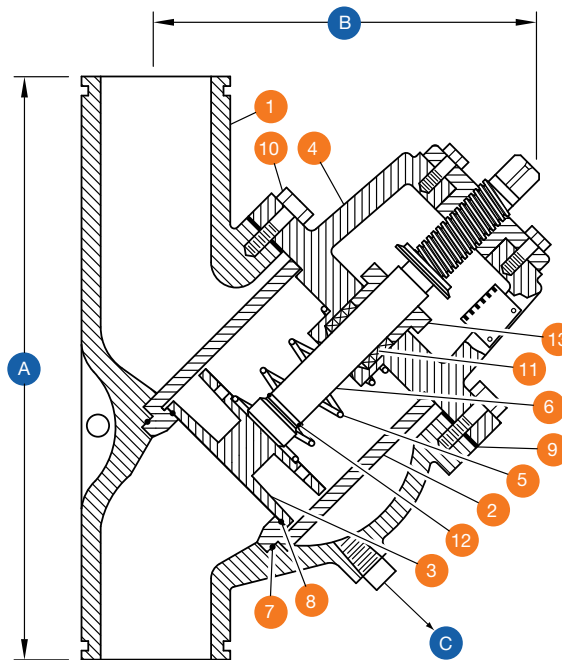


Grinnell

by Tyco Fire Suppression & Building Products

Model TD830

Triple-Duty Valve, Flow-Control Type



Nominal Pipe Size		Nominal Dimensions Inches (mm)			Approx. Weight Lbs. (kg)
ANSI Inches DN	O.D. Inches (mm)	A	B OPEN	C NPT	
2 DN50	2.375 (60,3)	9.375 (238,1)	9.625 (244,5)	1/2 (15)	23.0 (10,0)
2-1/2 DN65	2.875 (73,0)	10.250 (260,4)	9.625 (244,5)	1/2 (15)	24.0 (10,9)
3 DN80	3.500 (88,9)	11.250 (285,8)	10.125 (257,2)	1/2 (15)	33.0 (15,0)
4 DN100	4.500 (114,3)	15.625 (397,9)	11.125 (282,6)	1/2 (15)	84.0 (38,0)
5 DN125	5.563 (141,3)	15.625 (397,9)	11.125 (282,6)	1/2 (15)	84.0 (38,0)
6 DN150	6.625 (168,3)	19.625 (498,5)	17.500 (444,5)	3/4 (20)	156.0 (70,0)
8 DN200	8.625 (219,1)	23.625 (600,0)	18.000 (457,2)	3/4 (20)	300.0 (136,0)
10 DN250	10.750 (273,1)	28.000 (711,2)	19.875 (504,8)	1 (25)	392.0 (178,0)
12 DN300	12.750 (323,9)	31.625 (803,3)	25.000 (635,0)	1 (25)	496.0 (225,0)
14 DN350	14.000 (355,6)	33.500 (851,0)	25.000 (635,0)	1 (25)	790.0 (358,3)

Item	Parts in Valve Assembly
1	Body
2	Seat Guide
3	Disc
4	Yoke Cover
5	Spring
6	Stem
7	Seat O-Rings
8	Disc O-Rings
9	Cover Gasket
10	Hex Head Cap Screws
11	Gland Packing
12	Stem O-Ring
13	Flanged Gland

Refer to **Technical Data Sheet G390** on the Model TD830 Valve for information on technical data, ordering procedures, installation and assembly instructions, and our limited warranty.



800-558-5236
www.grinnell.com
mechserv@grinnell.com



Grinnell

by Tyco Fire Suppression & Building Products