

# GRINNELL CASE FILE

Putting more "in the pipeline" for you

## Sutton Middle School

Atlanta, GA



Line Offsets



Flexible Field Fabrication

### MARKET:

HVAC

### COMPLETED:

Fall, 2006

### DISTRIBUTOR:

Noland Supply - Atlanta

### GENERAL CONTRACTOR:

Winters Construction

### CONTRACTOR:

Shumate Mechanical

### SPECIFICATIONS:

HVAC

Steel Pipe, Up to 6"

772 Couplings, Fittings,  
BFV, Check Valves, Suction  
Diffusers, Strainers



Under Construction

### GRINNELL SOLUTIONS:

Sutton Middle School was a fast track renovation project set in the Atlanta Suburban Neighborhood of Chastain Park. The newly renovated state-of-the-art complex is much more than an educational facility; the campus also includes a meeting and conference center, a media center, an arts complex, and premier science and computer labs. As a high-profile project, the building had to be operational in time for the 2006 school year, and therefore product availability and experienced resources were of the utmost importance. Grinnell's expert team worked along side the distributor and contractor to expedite the project and provide superior technical and customer service. The facility is now cooled/heated by an 80/20 hybrid mix of Grinnell Mechanical grooved products, and a conventional welded piping condenser water system.

#### PROJECT BENEFITS:

- Grinnell Products are backed by the industry's best 10-year Limited Warranty
- Fast Product Turn Around
- Patented, Time-Saving 772 Coupling
- Superior Customer Service

**tyco**

Fire Suppression  
& Building Products



**Grinnell**<sup>®</sup>  
MECHANICAL SERVICES

# GRINNELL CASE FILE

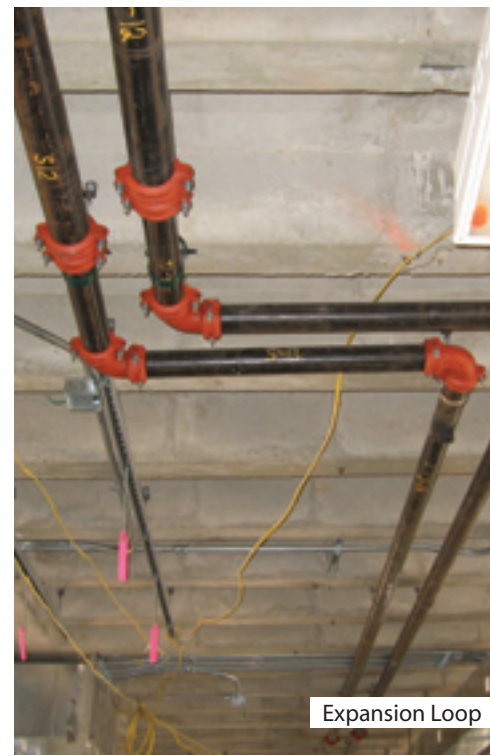
Putting more "in the pipeline" for you

Sutton Middle School

Atlanta, GA



45° Bend



Expansion Loop



## Grinnell®

MECHANICAL SERVICES

**CUSTOMER SERVICE**  
800-558-5236

**TECHNICAL SERVICES**  
866-500-4768

[www.grinnell.com](http://www.grinnell.com)



**Grinnell®**  
MECHANICAL PRODUCTS

**tyco**

Fire Suppression  
& Building Products

© 2008 Tyco Fire & Building Products.