

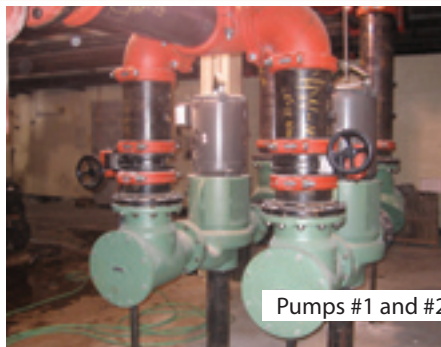
# GRINNELL CASE FILE

Putting more "in the pipeline" for you

South Atlanta High School | Atlanta, Georgia



10" Chilled Water Line



Pumps #1 and #2



Hot Water Expansion Tank

**MARKET:**  
HVAC

**COMPLETED:**  
January 2008

**DISTRIBUTOR:**  
Gainesville Windustrial

**GENERAL CONTRACTOR:**  
Winter Construction

**CONTRACTOR:**  
Shumate Mechanical

**SPECIFICATIONS:**  
2-10" 705/772 Couplings  
Strainers  
Suction Diffusers  
Circuit Balancing Valves



South Atlanta High School

## GRINNELL SOLUTIONS:

South Atlanta High School was built in 1970 and was due for a complete mechanical overhaul. Due to a tight schedule and close quarters making installation difficult, Grinnell Mechanical Products was the perfect choice for this project. This facility is now state-of-the-art including an indoor shooting range, and an aircraft hanger for aeronautics classes.

### PROJECT BENEFITS:

- Fast Project Turnaround
- Cost Saving Solutions
- Backed by the industry's leading 10-year limited warranty

**tyco**

Fire Suppression  
& Building Products



**Grinnell**<sup>®</sup>  
MECHANICAL SERVICES

# GRINNELL CASE FILE

*Putting more "in the pipeline" for you*

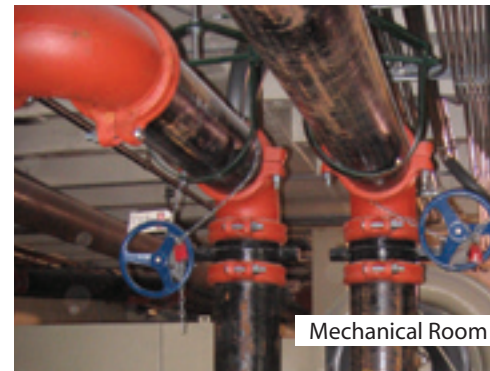
South Atlanta High School | Atlanta, Georgia



Mechanical Room



Mechanical Room



Mechanical Room



## Grinnell®

MECHANICAL SERVICES

### CUSTOMER SERVICE

800-558-5236

### TECHNICAL SERVICES

866-500-4768

[www.grinnell.com](http://www.grinnell.com)



**tyco**

Fire Suppression  
& Building Products